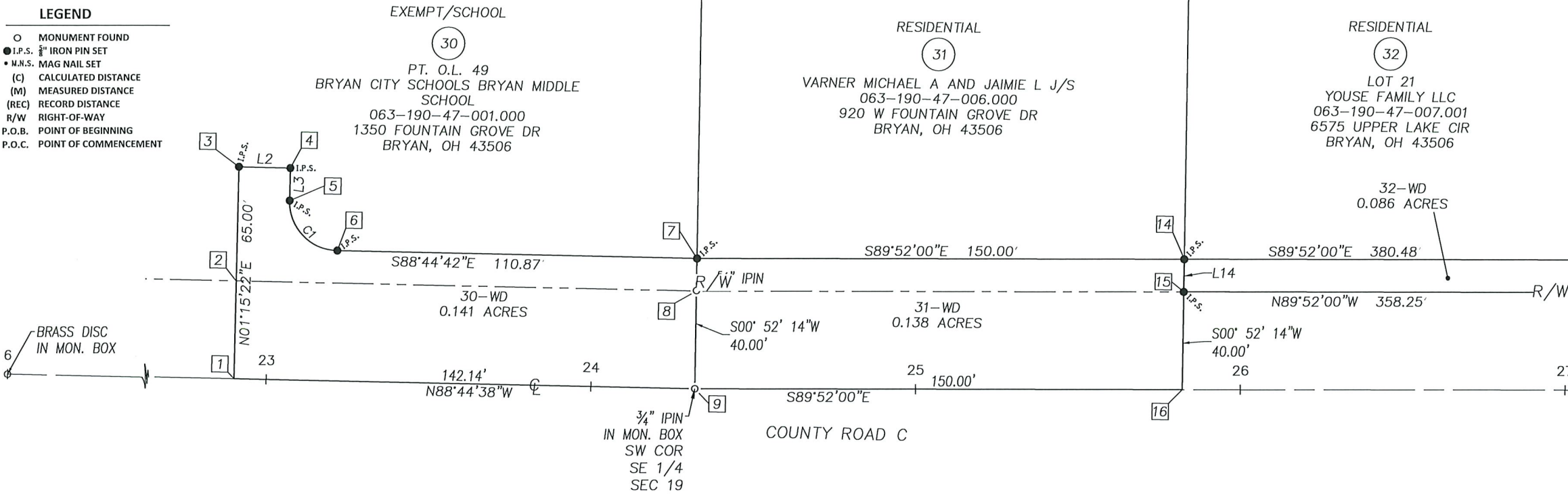


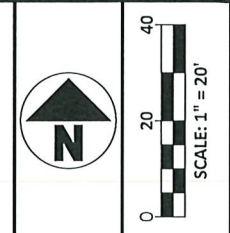
R/W CURVE TABLE					
CURVE #	LENGTH	RADIUS	DELTA	CHORD DIRECTION	CHORD LENGTH
C1	23.56'	15.00'	90°00'00"	S43°44'38"E	21.21'
C2	25.23'	30.00'	48°11'23"	S66°02'18"W	24.49'

- LEGEND**
- MONUMENT FOUND
 - I.P.S. 3/8" IRON PIN SET
 - M.N.S. MAG NAIL SET
 - (C) CALCULATED DISTANCE
 - (M) MEASURED DISTANCE
 - (REC) RECORD DISTANCE
 - R/W RIGHT-OF-WAY
 - P.O.B. POINT OF BEGINNING
 - P.O.C. POINT OF COMMENCEMENT

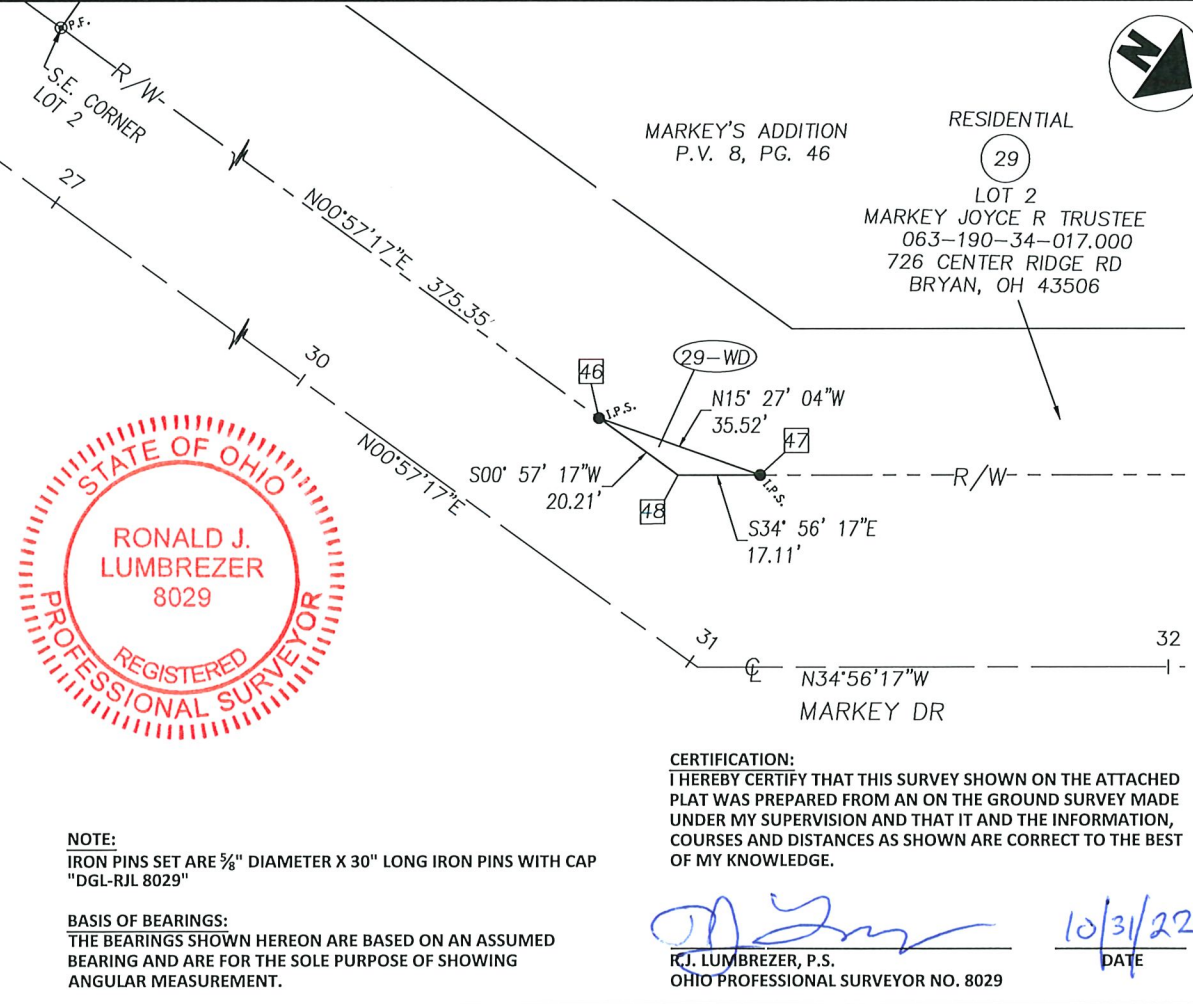
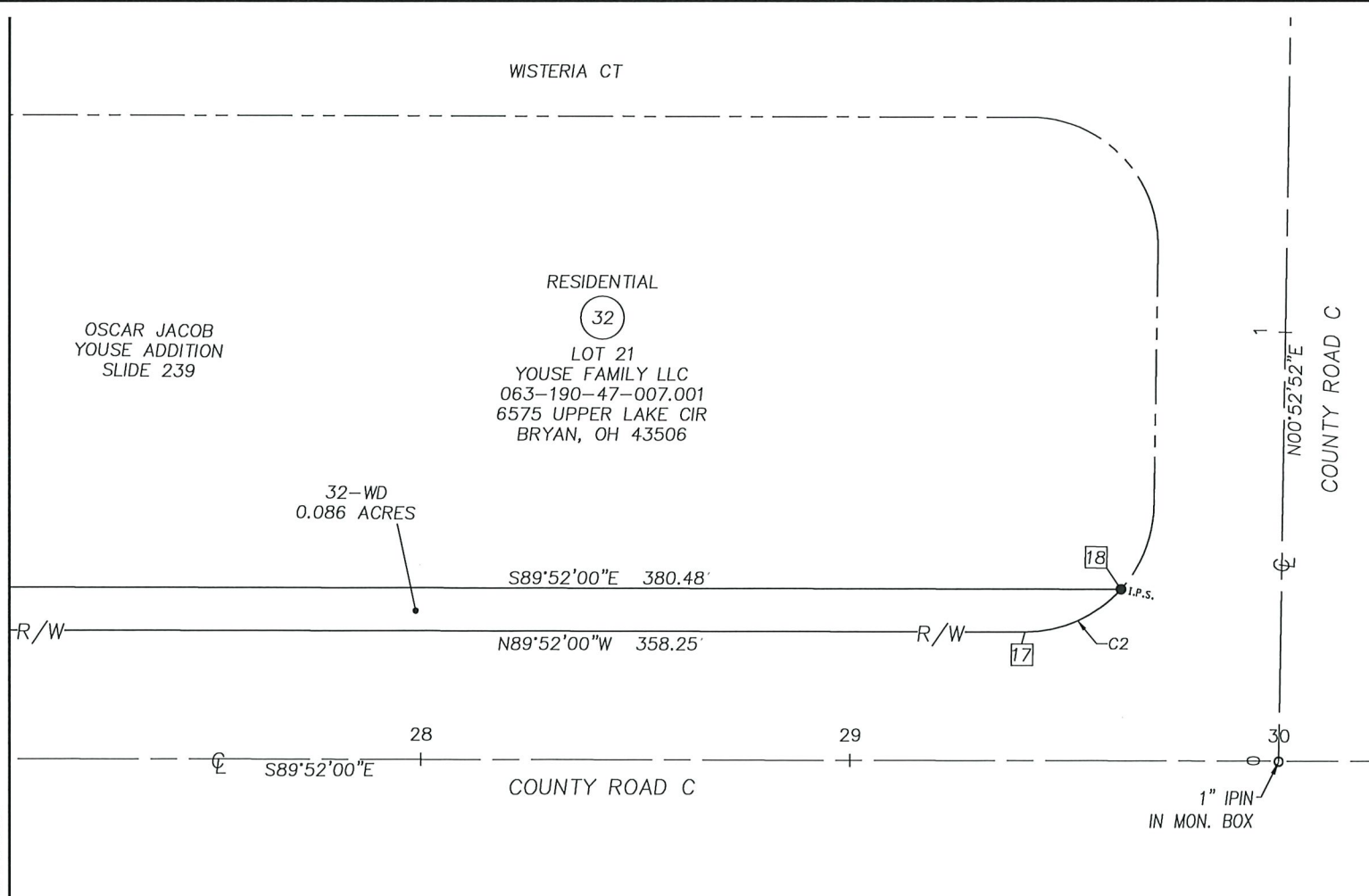


R/W LINE TABLE		
LINE #	LENGTH	DIRECTION
L2	16.00'	S88°44'38"E
L3	10.00'	S01°15'22"W
L14	10.00'	S00°52'14"W

R/W STATION AND OFFSET TABLE		
POINT #	STATION	OFFSET
1	22+90.00	0.00' C
2	22+90.00	30.00' LT
3	22+90.00	65.00' LT
4	23+06.00	65.00' LT
5	23+06.00	55.00' LT
6	23+21.00	40.00' LT
7	24+32.66	40.00' LT
8	24+32.53	30.00' LT
9	24+32.14	0.00' C
14	25+82.66	40.00' LT
15	25+82.53	30.00' LT
16	25+82.14	0.00' C
17	29+40.78	30.00' LT
18	29+63.14	40.00' LT
46	30+55.00	30.22' LT.
47	31+15.00	40.00' LT.
48	30+75.21	30.00' LT.



NO	REVISION	DATE
9		
8		
7		
6		
5		
4		
3		
2		
1		
NO		



NOTE:
 IRON PINS SET ARE 3/8" DIAMETER X 30" LONG IRON PINS WITH CAP "DGL-RJL 8029"

BASIS OF BEARINGS:
 THE BEARINGS SHOWN HEREON ARE BASED ON AN ASSUMED BEARING AND ARE FOR THE SOLE PURPOSE OF SHOWING ANGULAR MEASUREMENT.

CERTIFICATION:
 I HEREBY CERTIFY THAT THIS SURVEY SHOWN ON THE ATTACHED PLAT WAS PREPARED FROM AN ON THE GROUND SURVEY MADE UNDER MY SUPERVISION AND THAT IT AND THE INFORMATION, COURSES AND DISTANCES AS SHOWN ARE CORRECT TO THE BEST OF MY KNOWLEDGE.

RJ. Lumbrezer
 R.J. LUMBREZER, P.S.
 OHIO PROFESSIONAL SURVEYOR NO. 8029
 DATE 10/31/22



CITY OF BRYAN
 PART OF THE SOUTHEAST QUARTER, SECTION 19,
 CITY OF BRYAN, WILLIAMS COUNTY, OHIO

SURVEY

FILE: 113489_BNDY TAKES (1)
 JOB NO.: 21015
 DRAWN BY: KEY
 ISSUED: 10/31/2022

1/1